



SARA® STEDY STANDING AID

# Safe and easy every day transfers

Promoting mobility, support and dignity

# Sara<sup>®</sup> Stedy

Promoting  
mobilisation in  
daily tasks

At Arjo, we strive to improve quality of life for people with reduced mobility and age-related health challenges. One of our key goals is to help improve clinical outcomes by promoting safe, effective mobility of patients and residents across care settings to help enhance quality of life and support recovery.

Building on the success of the Sara Stedy, we are pleased to introduce Sara Stedy Compact: a standing aid that caters to smaller-sized patients and residents. Delivering enhanced flexibility across patient and resident demographics and clinical needs, the Sara Stedy range ensures a wide range of patients and residents can be safely and ergonomically positioned from a seated to a standing position with ease.



## Flexibility across patient and resident capability

Sara Stedy and Sara Stedy Compact, are specifically designed for patients and residents that are unable to mobilise without assistance but are able to contribute to the action or perform part of the action independently. With these patients and residents, it is important to stimulate movement to accelerate recovery or slow down the deterioration of mobility. Please contact Arjo for further information regarding the Mobility Gallery™.

## Promote early mobilisation

Sara Stedy can support early mobility initiatives by encouraging patients to take an increasingly active role in their functional rehabilitation.

## Sara Stedy enables single caregiver usage

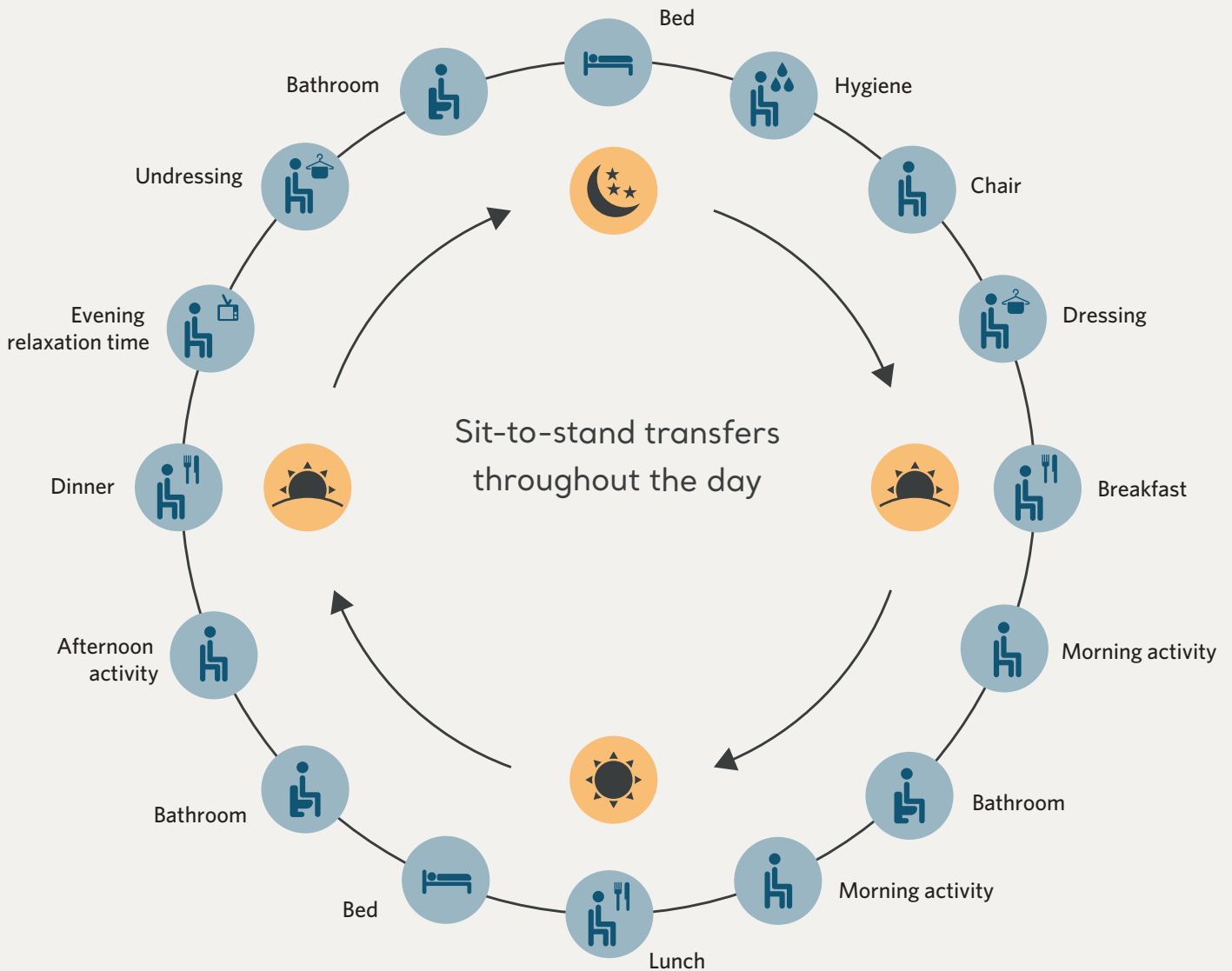
Sara Stedy enables one caregiver to perform sit-to-stand tasks for a wide range of patients according to individual size and clinical assessments.

## Simplified every day transfers

The Sara Stedy and Sara Stedy Compact are non-powered devices and are always ready to use. They help to simplify every day transfer tasks and increase moveability for patients.



## FOR QUICK, EASY AND SAFE TRANSFER IN EVERY DAY CARE TASKS



### THE ESSENTIAL TASK

Standing and raising is an essential transfer task, often performed multiple times a day. The ability to rise from a seated position is one of the most fundamental movements amongst normal activities of daily living. Sitting to standing is a key step in the mobility process, being a natural precursor to walking. If performed without the right equipment or using an unsafe manual technique, it is a transfer that can put both patient and caregiver at risk of serious injury.

The Sara Stedy range ensures that sit-to-stand transfers can be carried out safely, quickly and with ease.

Both Sara Stedy and Sara Stedy Compact promote ease of use throughout the sit-to-stand movement and encourage patients to take an active role in everyday transfers, including transfers from bed to chair, toilet or washbasin.

# Tailor transfers according to need

Available in two sizes ensuring flexibility across height range of patients and residents

## SARA STEDY

Sara Stedy meets the needs of patients in the height range of 149-193cm, 4'11"-6'6" and weight up to 182 kg, 400 lbs.



## SARA STEDY COMPACT

Sara Stedy Compact meets the needs of smaller patients in the height range of 138-172cm, 4'6"-5'8" and weight up to 182 kg, 400 lbs.



### INNOVATIVE PIVOTING SEAT OPENING

Easily accessible for the patient and requires minimal handling by the caregiver

### CAREGIVER HANDLE

Intuitive and easy to use for safe patient transfer

### CROSSBAR HANDLE

Allows the patient to support themselves by pulling rather than pushing

### ENHANCED SEAT DESIGN

Built-in seat handgrips which allow the caregiver to easily turn the support aid

### KNEE SUPPORT

Additional support when a patient cannot fully control leg movements

### SAFE WORKING LOAD

Robust frame to hold weight up to 182kg (400 lbs)

### PEDAL-OPERATED CHASSIS LEGS

Easily adjusted for optimum access during transfers

### TOTAL-LOCK CASTORS

Provides complete support when the aid is stationary

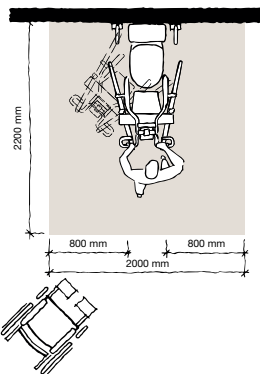
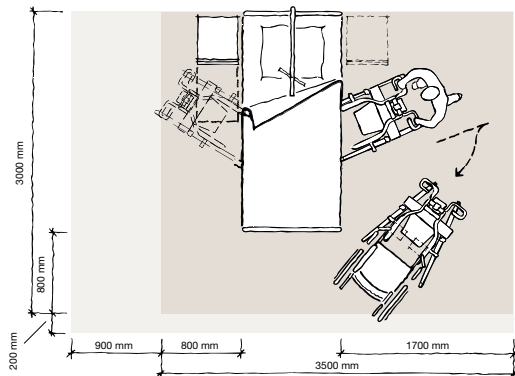




Enables one caregiver to transfer patients safely and with ease

# Product specifications

## Space requirements



Grey area shows the minimum working area required for the staff to be able to use the mechanical aids in an ergonomic way from one side.

Light grey area shows required extension of working area to facilitate activities from either side to provide adequate access for the resident, mechanical aid and assisting carer.

## Product information: Sara Stedy and Sara Stedy Compact

| Product Information        | Sara Stedy         | Sara Stedy Compact |
|----------------------------|--------------------|--------------------|
| Max safe working load      | 182 kg (400 lbs)   | 182 kg (400 lbs)   |
| Weight                     | 29,4kg (64,82 lbs) | 28,3 kg (62,5 lbs) |
| Total length               | 92 cm (36,2 in)    | 89 cm (35 in)      |
| Total height               | 105 cm (41,3 in)   | 96 cm (37,8 in)    |
| Height of chassis          | 10 cm (3,9 in)     | 10 cm (3,9 in)     |
| Internal width legs closed | 36 cm (14,2 in)    | 36 cm (14,2 in)    |
| Internal width legs open   | 75 cm (29,5 in)    | 75 cm (29,5 in)    |
| External width legs open   | 88 cm (34,6 in)    | 88 cm (34,6 in)    |

## Approvals

The products are in compliance with current legislation and applicable product standards

EN ISO 10535:2006 (TÜV SÜD)

## Accessories

Compatible Arjo Slings and Flites (disposable slings).

## Using Sara Stedy or Sara Stedy Compact

The Arjo Mobility Gallery provides a general indication of the mobility categories that can benefit from using Sara Stedy or Sara Stedy Compact. However, support aid selection should always be based on an individual clinical assessment by a doctor, registered nurse, certified clinician or similar.

## Mobility Gallery™

Suitable for Barbara



**B Barbara,**  
who can support herself to some degree.

Please contact Arjo for further information on the Mobility Gallery.

May 2018. Only Arjo designed parts, which are designed specifically for the purpose, should be used on the equipment and products supplied by Arjo. As our policy is one of continuous development we reserve the right to modify designs and specifications without prior notice. ® and ™ are trademarks belonging to the Arjo group of companies.  
© Arjo, 2018

At Arjo, we are committed to improving the everyday lives of people affected by reduced mobility and age-related health challenges. With products and solutions that ensure ergonomic patient handling, personal hygiene, disinfection, diagnostics, and the effective prevention of pressure ulcers and venous thromboembolism, we help professionals across care environments to continually raise the standard of safe and dignified care. Everything we do, we do with people in mind.

Arjo AB • Hans Michelsengatan 10 • 211 20 Malmö • Sweden • +46 10 335 4500

www.arjo.com