

ARJOHUNTLEIGH

GETINGE GROUP

SARA STEDY
ENHANCED STANDING AID



...with people in mind



ENHANCING SUPPORT FOR MORE PATIENTS

Sara Stedy®, a new enhanced standing aid, builds on the success of *Stedy*®, a proven mobility-promoting support aid that encourages more mobile patients and residents/patients to stand up independently. With a number of new enhancements, *Sara Stedy* helps to minimize manual handling by caregivers in an even wider range of healthcare situations. With an increased inner width, a new seat shape and a new safe working load of 400 lbs (182 kg), *Sara Stedy* also meets the standing assistance needs of larger residents/patients. Enhanced features include a pivoting divided seat and pedal-operated chassis legs that ensure improved comfort and support, and make working routines easier for caregivers.

New Seat Design



The innovative pivoting seat improves transfer efficiency and resident/patient stability

Eas-to-Open Chassis



Pedal-operated chassis legs adjust easily for optimum access during transfers

Total-Lock Castors



New total-lock castors provide complete stability when the aid is stationary

Built-in Seat Hand grips



Hand grips integrated in the seat allow the caregiver to easily turn the support aid

Better Knee Support



Provides extra stability and firm support when a resident/patient cannot fully control leg movements

Lower Chassis



Smaller castors and redesigned legs mean a lower chassis for better access





A VERSATILE STAND AND TRANSFER AID

A better alternative to a wheelchair

The enhanced standing aid concept has become well established in a wide range of healthcare situations that include long term care and acute care facilities because it:

- offers a more suitable and dignified alternative to a wheelchair for more mobile residents/patients
- promotes dignity and independence, as optimum participation in activities is possible
- enables good, reassuring eye contact between resident/patient and caregiver, unlike a wheelchair
- provides transport to the toilet and sink, and can support other activities of daily living

When at the toilet, the resident/patient is encouraged to stand, supported by *Sara Stedy*. The resident's/patient's independence and dignity is actively promoted. When required, the caregiver can assist with the adjustment of clothing in an easy and safe way.

FOR QUICK, EASY AND SAFE TRANSFERS



Approach the resident/patient, open seat flaps, open chassis legs and place the resident's/patient's feet on the footboard



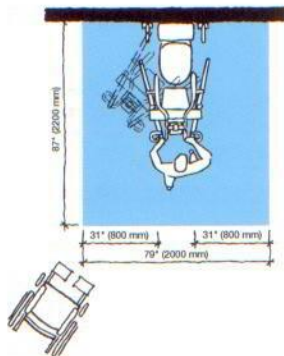
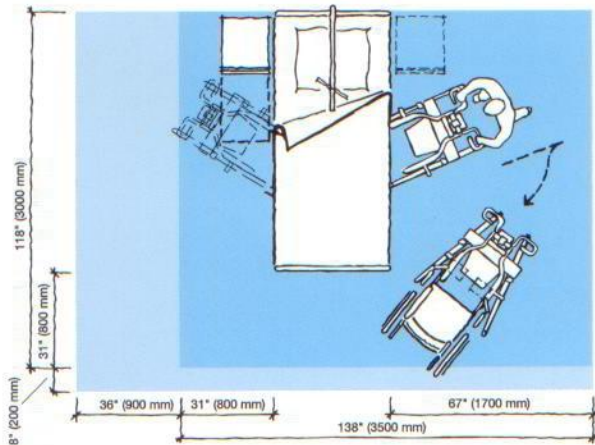
Position the *Sara Stedy*; apply castor brakes; raise the resident/patient with the help of the integrated handlebar; swivel the seat flaps into position



Release the brakes and proceed with the transfer

PRODUCT SPECIFICATIONS

Space requirement



- Blue area shows the minimum working area required for the staff to be able to use the mechanical aids in an ergonomic way from one side.
- Light blue area shows required extension of working area to facilitate activities from either side to provide adequate access for the resident, mechanical aid and assisting caregiver.

Product information

Weight	65 lbs (29.4 kg)
Max. safe working load	400 lbs (182 kg)
Total length	32 3/4" (905 mm)
Total height	41 1/2" (1051 mm)
Height of Chassis	4" (100 mm)
Internal width of legs open	24 3/4" (729 mm)

Low friction castors, the rear two with brakes

Lifter - Protection class IPX4

Approvals

This product is in compliance with current legislation and applicable product standards

Use only ArjoHuntleigh designed parts, i.e. parts specifically designed for the purpose, on equipment and products supplied by ArjoHuntleigh. As our policy is one of continuous development, we reserve the right to modify designs and specifications without prior notice. ® and ™ are trademarks belonging to the ArjoHuntleigh group of companies. © ArjoHuntleigh, 2011

Accessories

Compatible ArjoHuntleigh Slings and *Flites* (disposable slings)

Using Sara Steady

The ArjoHuntleigh *Mobility Gallery* provides a general indication of the mobility categories that can benefit from using the *Sara Steady*. However, support aid selection should always be based on an individual clinical assessment by a doctor, registered nurse, certified clinician or similar healthcare professional.

Mobility Gallery™

Suitable for Albert, Barbara and Carl



- A Albert**, who is ambulatory and independent
- B Barbara**, who can support herself to some degree
- C Carl**, who sits in a wheelchair and has little capacity to support himself

Please contact ArjoHuntleigh for further information on the *Mobility Gallery*™.

ARJOHUNTLEIGH

GETINGE GROUP

www.ArjoHuntleigh.com

ArjoHuntleigh Inc.
2349 West Lake Street
Addison, Illinois 60101
Phone: 800-323-1245
Fax: 630-925-7969

ArjoHuntleigh Canada Inc.
1575 South Gateway Road Unit C
Mississauga, Ontario L4W 5J1
CANADA
Phone: 800-665-4831
Info.Canada@ArjoHuntleigh.com

GETINGE GROUP is a leading global provider of products and systems that contribute to quality enhancement and cost efficiency within healthcare and life sciences. We operate under the three brands of ArjoHuntleigh, GETINGE and MAQUET. **ArjoHuntleigh** focuses on patient mobility and wound management solutions. **GETINGE** provides solutions for infection control within healthcare and contamination prevention within life sciences. **MAQUET** specializes in solutions, therapies and products for surgical interventions and intensive care.



93/42/EEC